

COLLECTION

VILMERS

VILMERS FABRIC COLLECTION 2023



03 CARE SYMBOLS

04 BOLD MICROFIBERS

05 | Texas

06 GREEN FIBERS

07 | Beryl

08 | Olvitine

09 LIKE LEATHER

10 | Bull

11 | Jersey

12 PURE LEATHER

13 | Diamonds

14 | Granada

15 | Vintage

16 PURE NATURE

17 | Sandstone

18 ROUGH STRUCTURE

19 | Alis

20 | Coltan

21 | Domino

22 | Fusion

23 | Garnet

24 | Honduras

25 | Marble

26 | Oasis

27 | Renegade

28 | Taffie

29 SIMPLY NORDIC

30 | Austin

31 | Casa

32 | Eton

33 | Hawks

34 | Lido

35 | Livale

36 | Natron

37 | Nordby

38 | Opal

39 | Paros

40 | Rocky Crystal

41 | Ruby

42 | Sneak

43 | Unit

44 SMOOTH VELVET

45 | Adore

46 | Royal

47 | Seven

48 | Velvetlux

CARE SYMBOLS



Wash at or below
(degrees in Celsius/Fahrenheit).



Do not wash.



Iron cool.



Do not iron.



Do not bleach.



Dry clean.



Do not dry clean.



Do not tumble dry.



Keep away from direct sunlight.

BOLD

MICROFIBERS

Enduring and easy to clean.

Composition | 55% PES, 40% PU, 5% CO

Martindale | 60 000

Lightfastness | 4-5

Pilling | 4-5

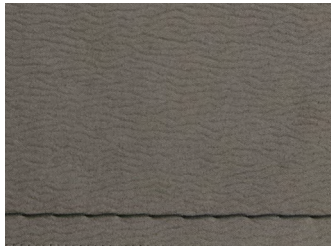


TEXAS

CAT 3



GREEN
Stitching Stone Grey



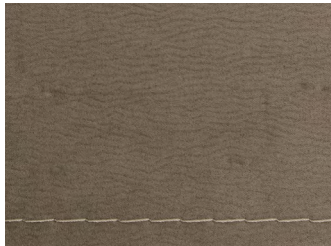
LIGHT GREY
Stitching Dark Grey



COGNAC
Stitching Saddle Brown



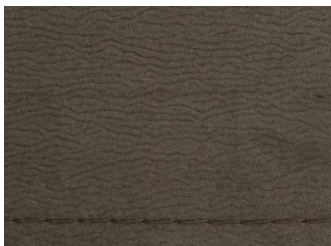
IVORY
Stitching Pastel Brown



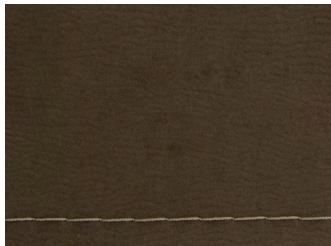
SILVER
Stitching Silk Grey



DARK GREY
Stitching Light Grey



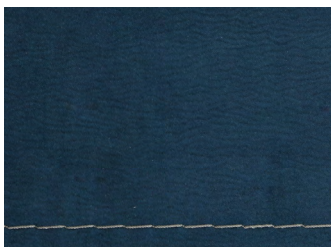
GREY
Stitching Chocolate



ELEPHANT
Stitching Stone Grey



YELLOW
Stitching Chocolate



BLUE
Stitching Grey

05

VILMERS FABRIC COLLECTION 2023

GREEN

FIBERS

Sustainable fabrics.

Composition | 55% RPES, 36% PES, 9% RCO

Martindale | 70 000

Lightfastness | 5

Pilling | 5



BERYL

CAT 3

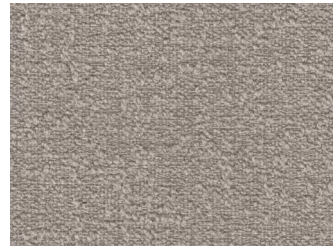
Boucle fabric



BRIGHT WHITE



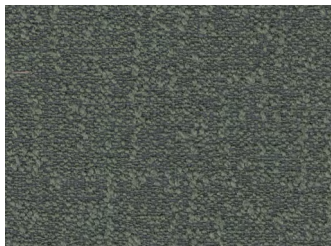
RAINY DAY



ALUMINIUM



CHOCOLATE
BROWN



MYRTLE



BLUE NIGHTS



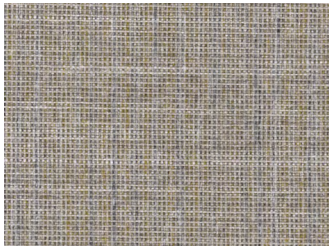
ANTHRACITE

Composition | 100% RPP
Martindale | 45 000
Lightfastness | 5
Pilling | 5

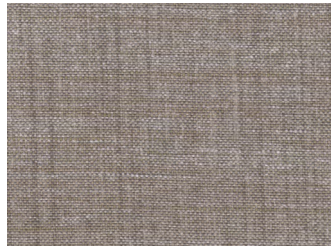


OLVITINE

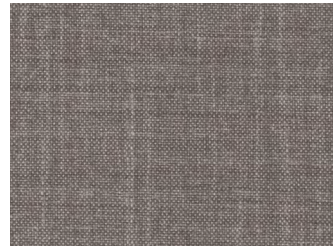
CAT1
Flat woven fabric



RAINY DAY



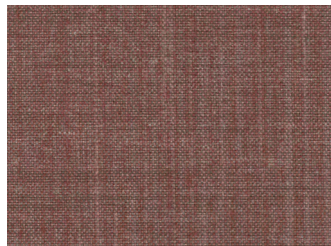
CORNSTALK



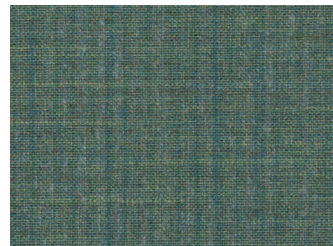
MOON ROCK



CHOCOLATE
BROWN



COPPER
BROWN



MYRTLE



STEEL GREY

LIKE

LEATHER

Sustainable leather.

Composition | 96% PES, 4% PU

Martindale | 32 000

Lightfastness | 4-5

Pilling | 4-5

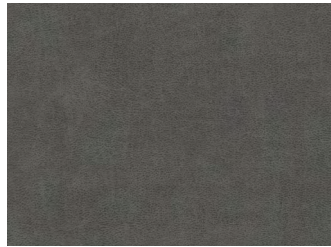


BULL

CAT 4



FOREST



GRAPHITE



BROWN



GREY



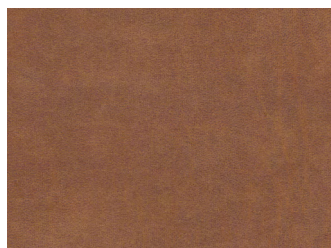
CAMEL



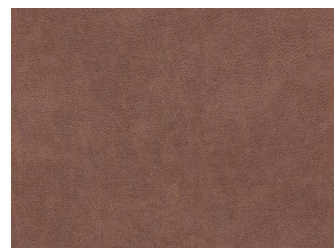
LIVER



NIAGARA



COGNAC



BRANDY



ANTHRACITE

10

Composition | 40% PES, 30% LEATHER, 30% AF

Martindale | 30 000

Lightfastness | 4

Pilling | 4-5



JERSEY

CAT 5



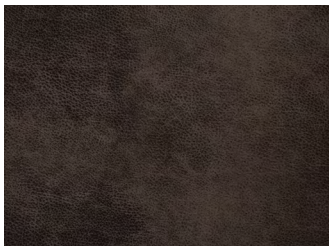
MOSS



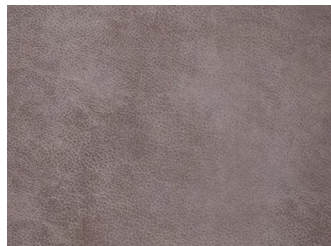
DARK GREY



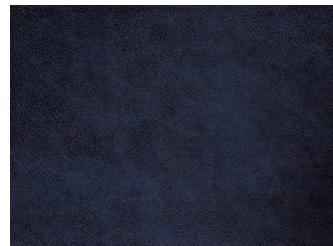
COGNAC



TABACCO



STONE



DARK BLUE

PURE

LEATHER

Natural leather.

Composition | 100% leather

Martindale | -

Lightfastness | 4

Pilling | -



DIAMONDS

CAT Leather A



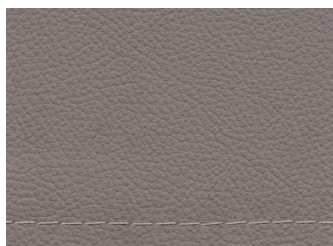
BRIGHT WHITE
Stitching Silk Grey



CORNSTALK
Stitching Stone Grey



STING
Stitching Bisque



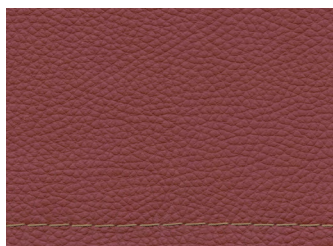
WALNUT
Stitching Stone Grey



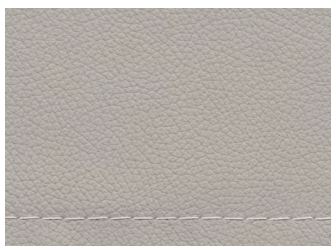
CHOCOLATE BROWN
Stitching Bisque



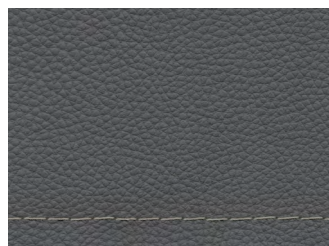
COPPER BROWN
Stitching Cafe



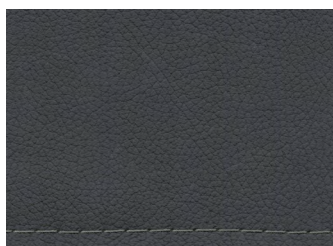
KARANDA RED
Stitching Latte



ASH
Stitching White



ANTRACITE
Stitching Grey Aluminium



BRISTOL BLACK
Stitching Grey

Composition | 100% leather

Martindale | -

Lightfastness | 4-5

Pilling | -



GRANADA

CAT Leather B



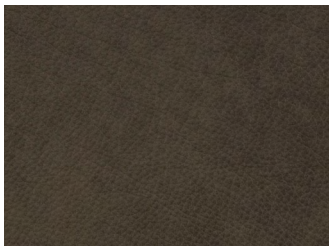
SAVANNAH



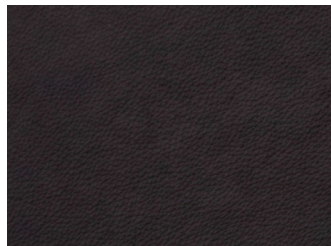
TAUPE



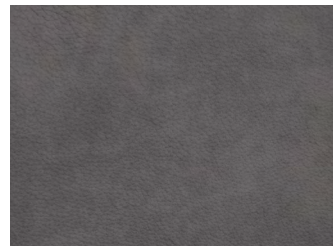
ASH



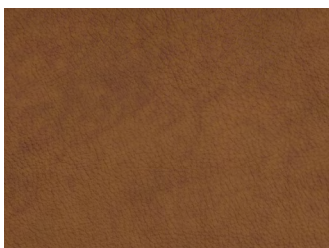
MOSS



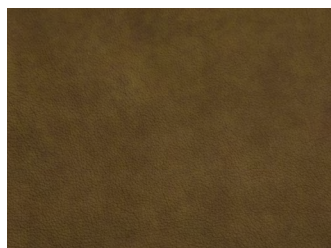
GRAPHITE



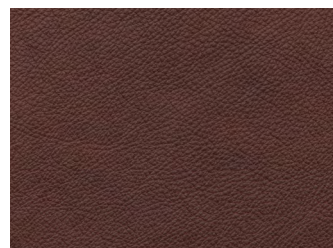
STEEL



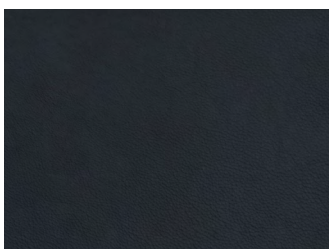
SAHARA



OLIVE



COGNAC



BLUE

Composition | 100% aniline leather

Martindale | -

Lightfastness | 3

Pilling | -



VINTAGE

CAT Leather B



COGNAC



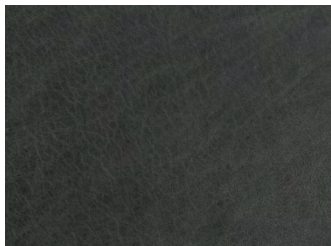
BROWN



OLIVE



TAUPE



GREY

PURE

NATURE

Natural fibers.

Composition | 63% CO, 37% LI

Martindale | 32 500

Lightfastness | 3

Pilling | 4

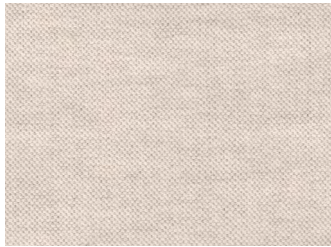


SANDSTONE

CAT 4



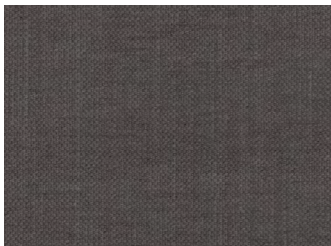
BRIGHT WHITE



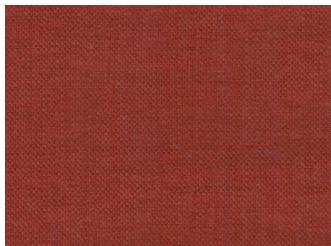
PARCHMENT



ALUMINIUM



CHOCOLATE
BROWN



COPPER BROWN



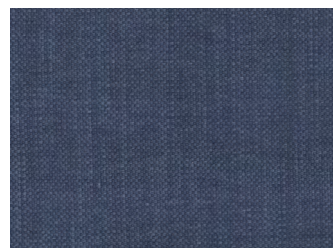
SMOKE GREY



CORNSTALK



TEA



BLUE NIGHTS



MIRAGE GREY



ASH

ROUGH

STRUCTURE

Fabrics with character.

Composition | 51% PES, 42% PAN, 7% COT

Martindale | 52 000

Lightfastness | 5

Pilling | 4-5



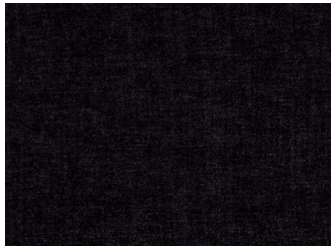
ALIS

CAT 2

Chenille fabric



BEIGE



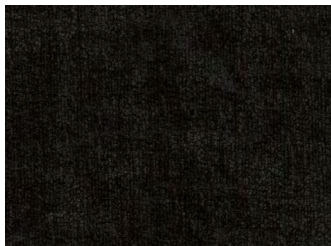
ANTRACIT



GREEN



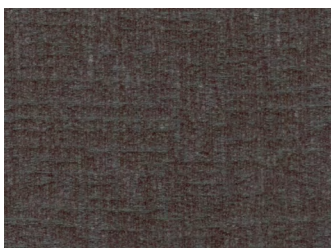
ECRU



MIDNAITT



GRA



GRAFIT



LYS GRA

Composition | 100% PES
Martindale | 100 000
Lightfastness | 4-5
Pilling | 4



COLTAN

CAT 3
Boucle fabric



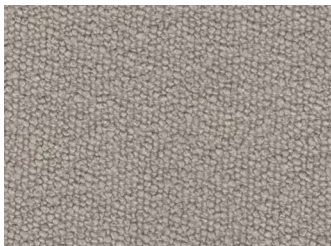
BRIGHT WHITE



RAINY DAY



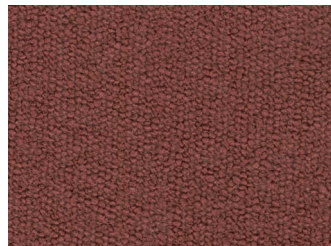
CORNSTALK



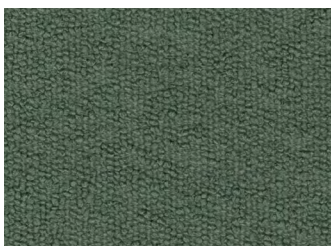
ALUMINUM



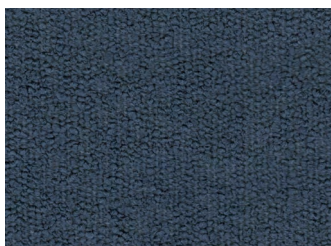
CHOCOLATE BROWN



COPPER BROWN



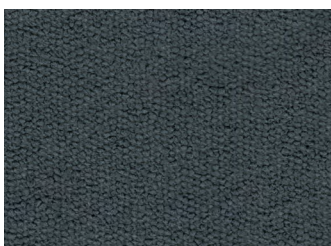
MYRTLE



BLUE NIGHTS



ASH



BRISTOL BLACK

Composition | 100% PES

Martindale | 35 000

Lightfastness | 5

Pilling | 4



DOMINO

CAT 3

Boucle fabric



IVORY



NATURAL



ONYX



BEIGE



GREY



STEEL



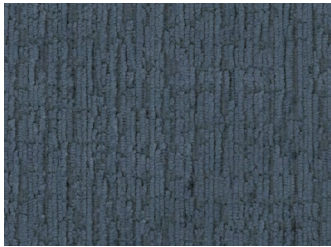
BROWN

Composition | 100% PES
Martindale | 85 000
Lightfastness | 5
Pilling | 4-5



FUSION

CAT 2
Chenille fabric



INDIGO



CREAM



THYME



ANTHRACITE



WOOD



BRANDY



ARMY



COGNAC

Composition | 100% PES
Martindale | 100 000
Lightfastness | 5
Pilling | 4-5



GARNET

CAT 3
Chenille fabric



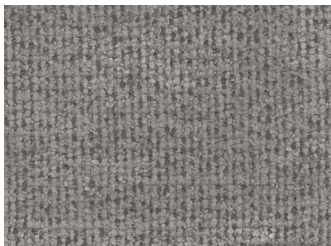
BRIGHT WHITE



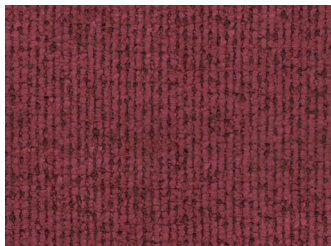
ALUMINIUM



CORNSTALK



MOON ROCK



KARANDA RED



MYRTLE



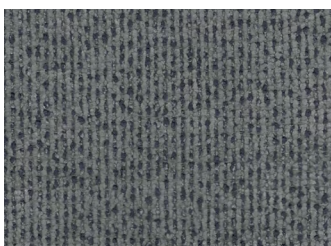
SMOKE BLUE



BLUE NIGHTS



ASH



STEEL GREY

Composition | 50% PES, 50% PP

Martindale | 26 000

Lightfastness | 5

Pilling | 4-5



HONDURAS

CAT 2

Chenille fabric



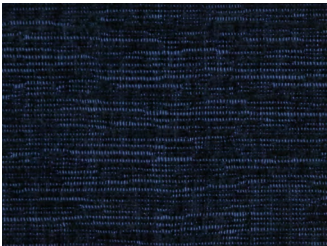
ECRU



SILVER



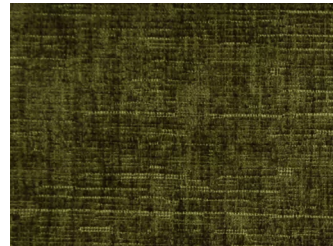
GRANITE



BLUE



DARK GREY



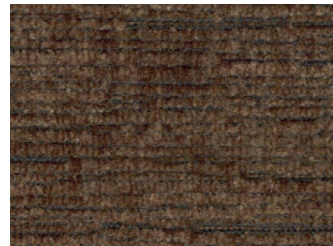
MOSS



LATTE



SKY



WALNUT



DARK BROWN

Composition | 90% PES, 10% N

Martindale | 40 000

Lightfastness | 4

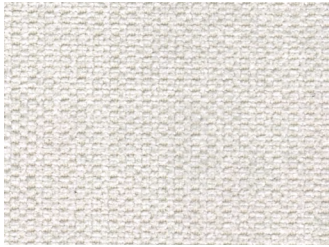
Pilling | 4



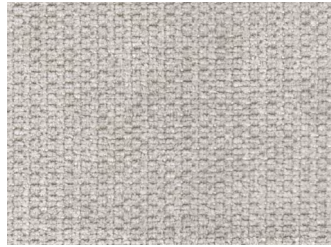
MARBLE

CAT 1

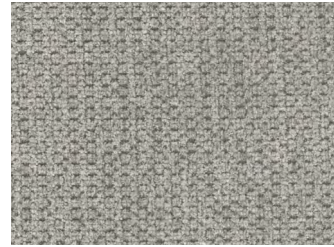
Micro Chenille fabric



PASTEL
PARCHMENT



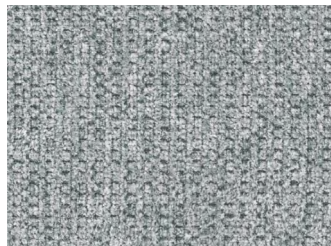
RAINY DAY



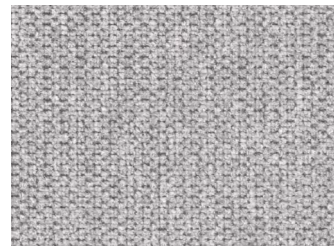
SILVER BIRCH



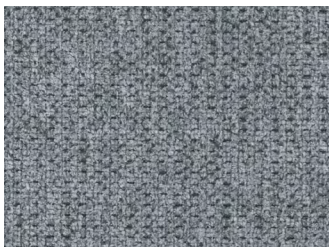
PINENEEDLE



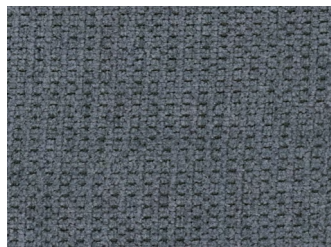
MIRAGE GREY



ASH



SMOKE BLUE



STEEL GREY



MOONLESS
NIGHT

Composition | 100% PES

Martindale | 100 000

Lightfastness | 5

Pilling | 4



OASIS

CAT 2

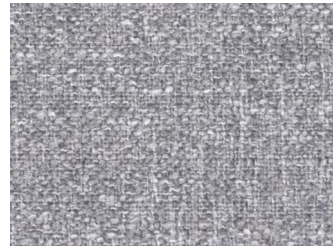
Chenille fabric



SHELL



NATUREL



ASH GREY



DARK BLUE



GREY



WOOD



TURTLE



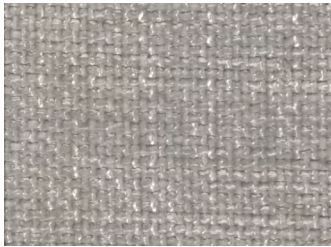
LAVA

Composition | 100% PES
Martindale | 100 000
Lightfastness | 5
Pilling | 4

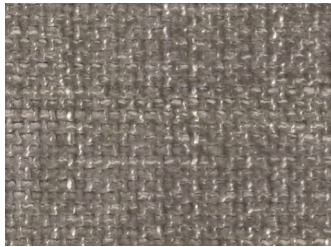


RENEGADE

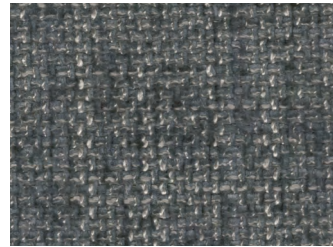
CAT 3
Chenille fabric



SHELL



DESERT



PLUMB



GRAPHITE



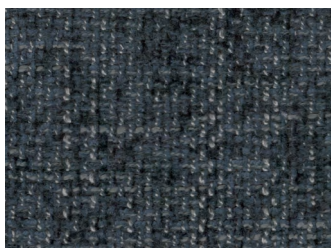
WOOD



FOREST



BRANDY



INDIGO

Composition | 48% PES, 37% PAN, 8% CO, 7% WO

Martindale | 35 000

Lightfastness | 5

Pilling | 4-5



TAFFIE

CAT 4

Boucle fabric



ECRU



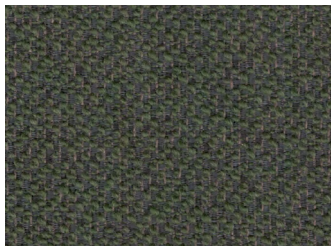
GRAFFIT



LATTE



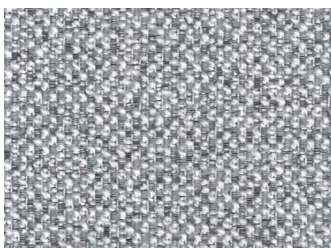
SILVER



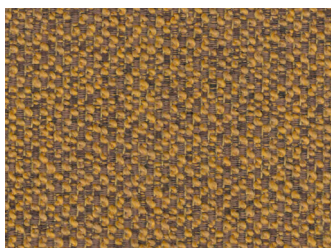
GREEN



GRÅ



GRANIT



YELLOW

SIMPLY

NORDIC

Textured comfort.

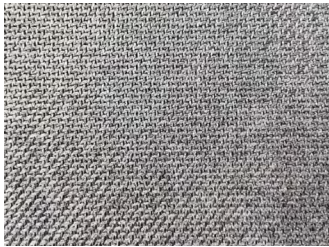
Composition | 100% PES
Martindale | 115 000
Lightfastness | 4-5
Pilling | 4



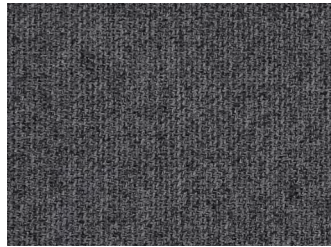
AUSTIN

CAT 2

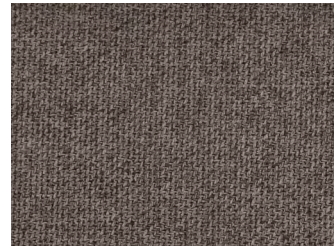
Micro Chenille fabric



LYS GRÅ



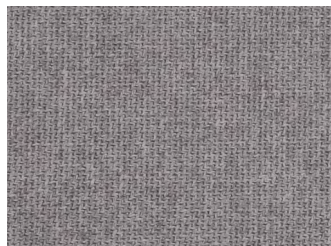
GRÅ



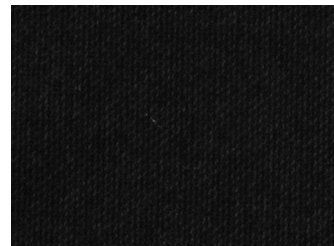
MULDVAD



BEIGE



SILVER



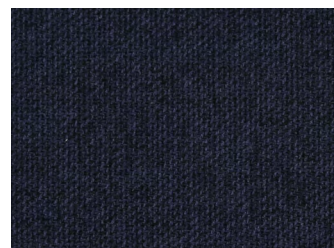
SORT



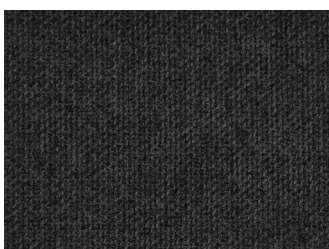
GOLDEN
YELLOW



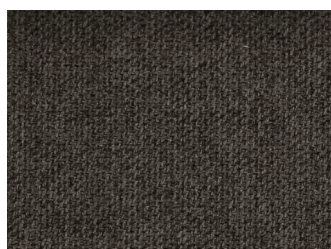
GRØNN



DYP BLÅ



MØRK GRÅ



BRUN



RUST

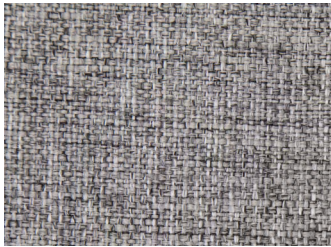
Composition | 100% PES
Martindale | 50 000
Lightfastness | 5
Pilling | 4-5



CASA

CAT1

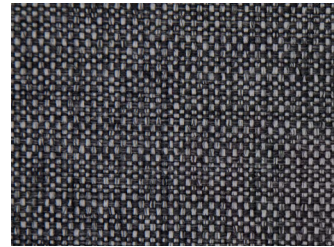
Flat woven fabric



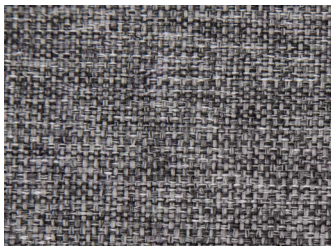
STONE



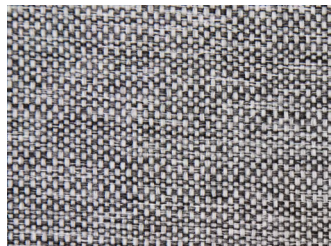
NIGHT



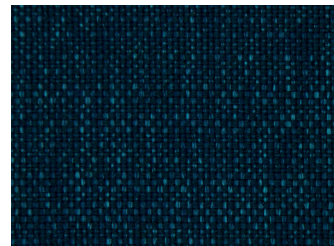
GRANIT



DARK GREY



SILVER



BLUE



TAUPE

Composition | 100% PES
Martindale | 80 000
Lightfastness | 4-5
Pilling | 4-5

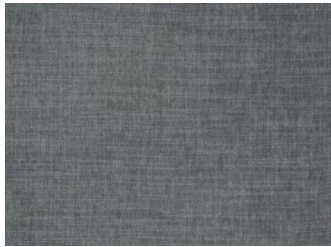


ETON

CAT 2
Chenille fabric



LIGHT GREY



WATER GREEN



CEMENT



ASH



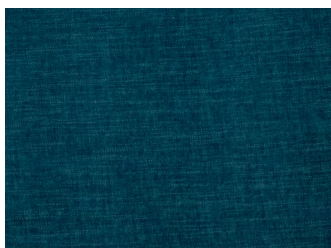
TRUFA



SKY



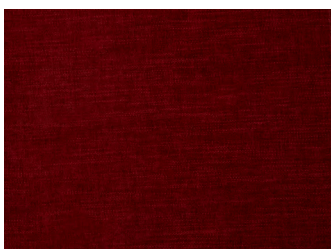
MOUSE



TURQUOISE



PINK



RED

Composition | 100% PES
Martindale | 85 000
Lightfastness | 5
Pilling | 4

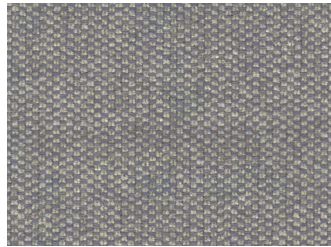


HAWKS

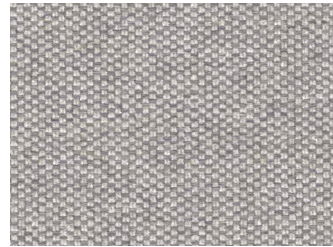
CAT 2
Chenille fabric



ASH



MIRAGE GREY



MOONSTRUCK



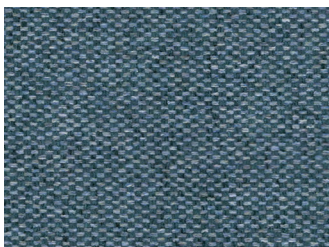
PASTEL
PARCHMENT



MOONLESS
NIGHT



STEEL GREY



INFINITY

Composition | 92% PES, 8% N

Martindale | 40 000

Lightfastness | 5

Pilling | 5



LIDO

CAT 2

Micro chenille fabric



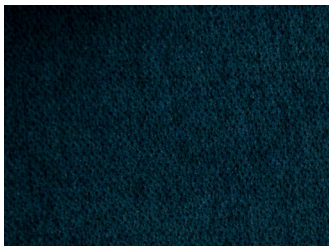
ANTRACIT



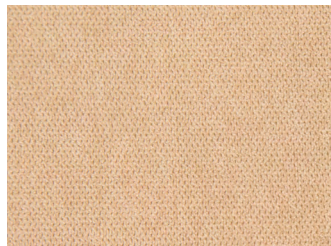
GREY



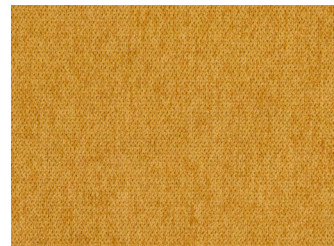
LIGHT BROWN



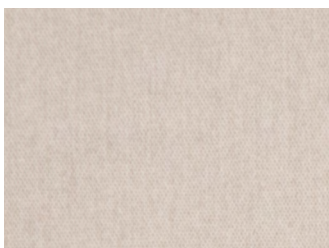
INK BLUE



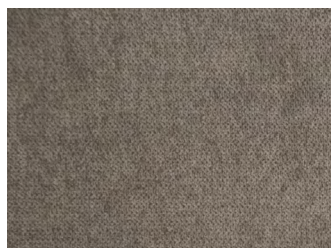
BEIGE



CUSTARD



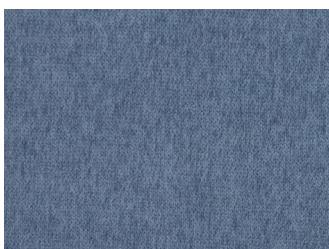
LIGHT GREY



BROWN



OLIVE



MARINE

Composition | 100% PES

Martindale | 35 000

Lightfastness | 4-5

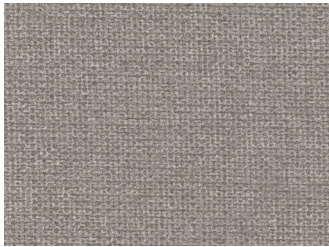
Pilling | 4-5



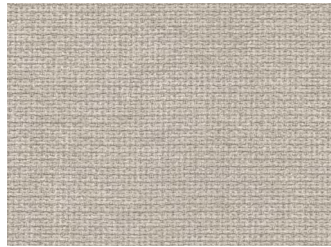
LIVALE

CAT 2

Chenille fabric



BEIGE



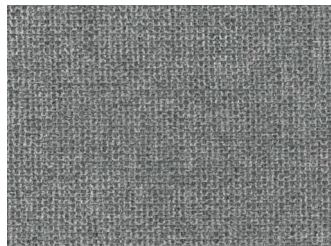
ECRU



BLUE



DARK GREY



GRANITE



FOREST

Composition | 95% PES, 5% CO

Martindale | 55 000

Lightfastness | 4

Pilling | 4



NATRON

CAT 4

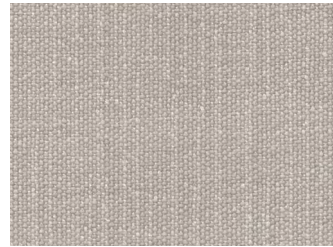
Chenille fabric



BRIGHT WHITE



SMOKE GREY



ALUMINIUM



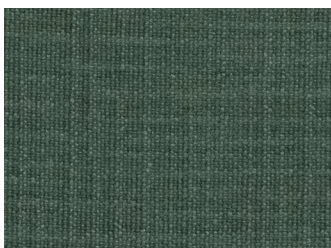
STUCCO



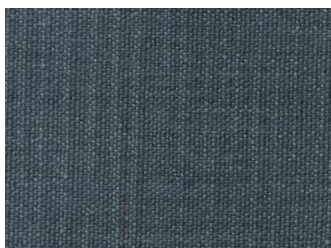
MARSALA



CORNSTALK



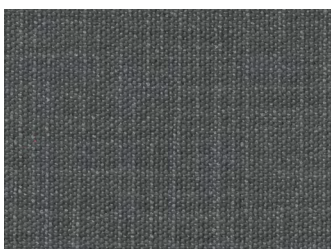
PINENEEDLE



BLUE NIGHTS



ASH



STEEL GREY

Composition | 100% PES

Martindale | 50 000

Lightfastness | 5

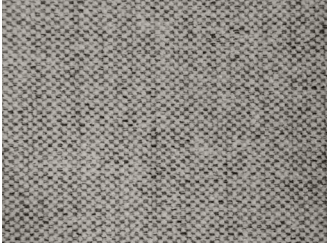
Pilling | 4-5



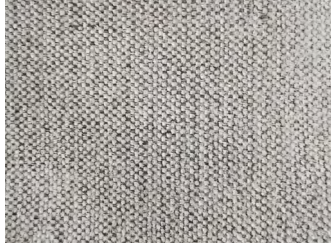
NORDBY

CAT 2

Chenille fabric



GREY



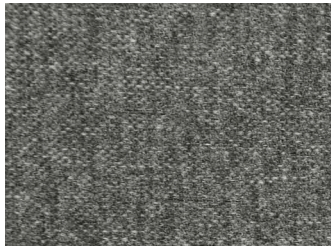
WHITE



SILVER



ASH



STEEL



PETROL



ALU



NAVY



GREEN

Composition | 66% RPP, 34% PES

Martindale | 30 000

Lightfastness | 5

Pilling | 5



OPAL

CAT 3

Chenille fabric



LINEN



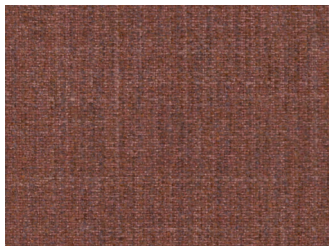
ALUMINIUM



MOON ROCK



CHOCOLATE
BROWN



COPPER BROWN



BLUE NIGHTS



ASH



STEEL GREY

Composition | 49% PES, 46% PAN, 5% CV

Martindale | 35 000

Lightfastness | 4-5

Pilling | 4



PAROS

CAT 2

Chenille fabric



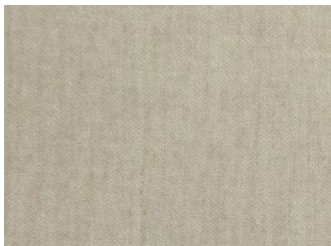
SAND



LIGHT GREY



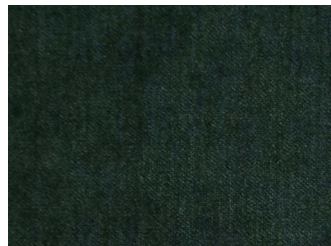
MARINE



IVORY



MIDNIGHT BLUE



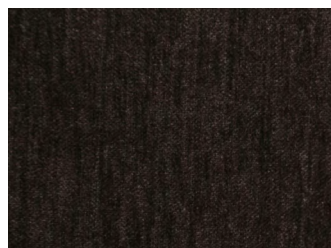
GREEN



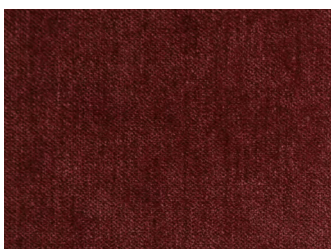
GRAFITT



BLÅ



BROWN



RUST

Composition | 100% PES

Martindale | 100 000

Lightfastness | 4

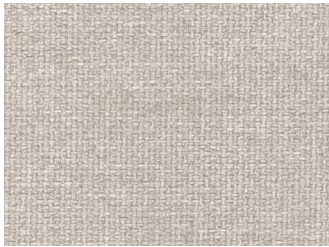
Pilling | 4



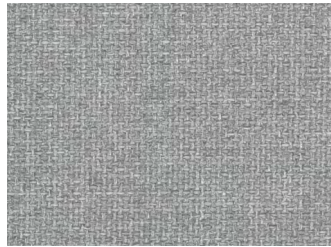
ROCKY CRYSTAL

CAT 1

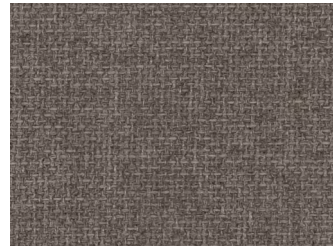
Flat woven fabric



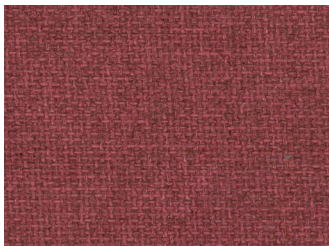
MOONSTRUCK



RAINY DAY



ALUMINIUM



MARSALA



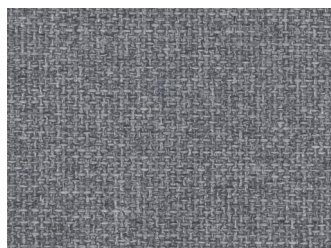
BLUE NIGHTS



SMOKE BLUE



ASH



STEEL GREY

Composition | 100% PES
Martindale | 80 000
Lightfastness | 5
Pilling | 4-5



RUBY

CAT1
Chenille fabric



RAINY DAY



ALUMINIUM



CHOCOLATE
BROWN



OLD ROSE



KARANDA RED



TEA



SMOKE BLUE



PINENEEDLE



STEEL GREY



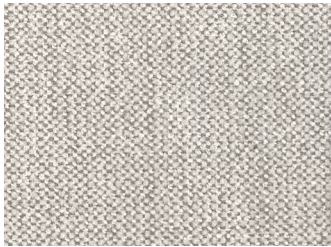
BRISTOL BLACK

Composition | 100% PES
Martindale | 38 000
Lightfastness | 4-5
Pilling | 4-5

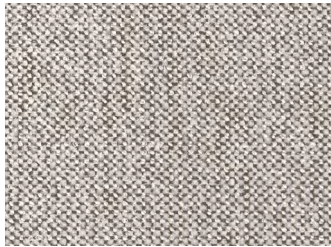


SNEAK

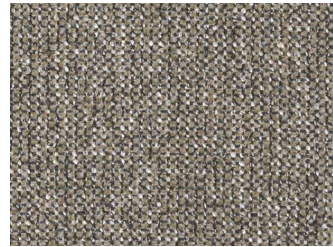
CAT 2
Chenille fabric



MOONSTRUCK



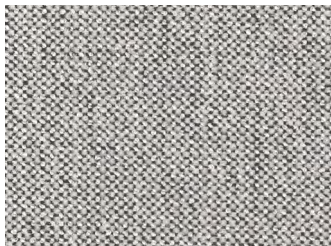
STUCCO



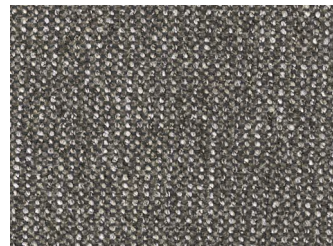
SESAME



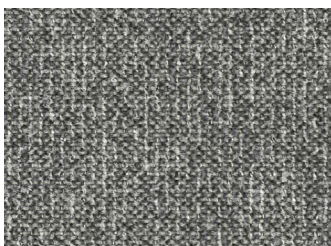
CORNSTALK



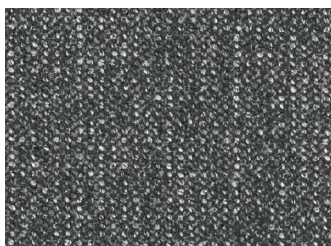
STEEL GREY



LIVER



STEEL



GREY



ANTHRACITE

Composition | 85% PES, 15% CO

Martindale | 35 000

Lightfastness | 4-5

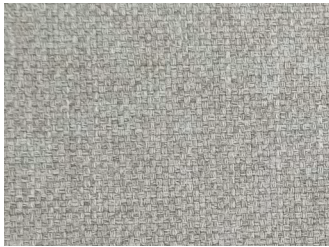
Pilling | 4-5



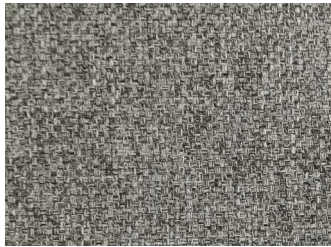
UNIT

CAT 2

Flat woven fabric



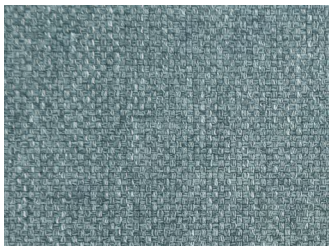
LIGHT GREY



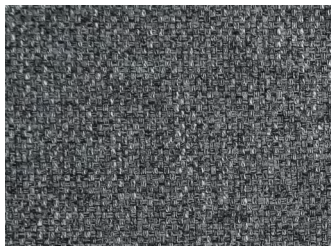
STONE



SESAME



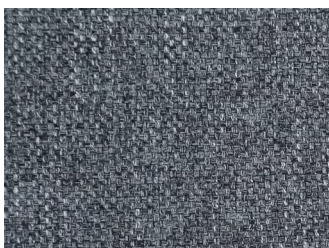
AQUA



DARK GREY



TAUPE



DENIM



ANTHRACITE



BROWN

SMOOTH

VELVET

Woven and knitted velvet.

Composition | 100% PES

Martindale | 88 000

Lightfastness | 5

Pilling | 5



ADORE

CAT 2



ANTHRACITE



HUNTER



DARK GREY



GOLD



PETROL



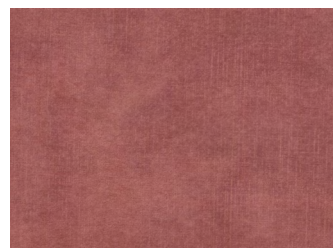
COPPER



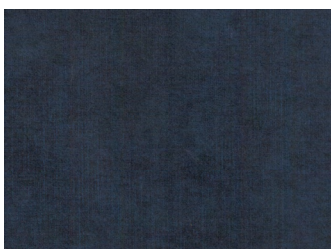
STEEL



COGNAC



BLUSH



INDIGO



MOSS

Composition | 100% PES

Martindale | 40 000

Lightfastness | 4-5

Pilling | 4-5



ROYAL

CAT 5



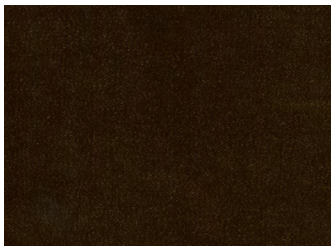
PETROL



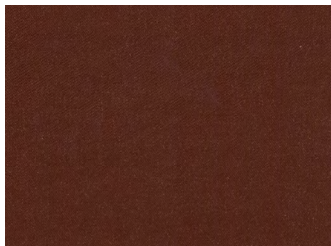
FOREST



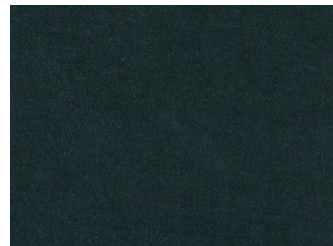
PINE



ARMY



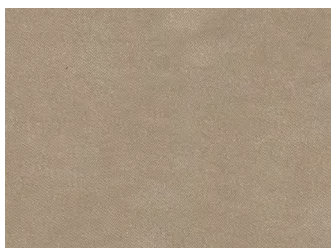
MARGNOLIA



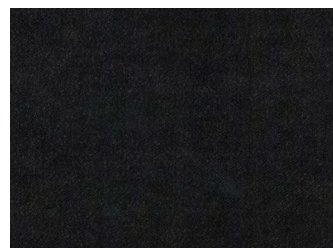
TURQUOISE



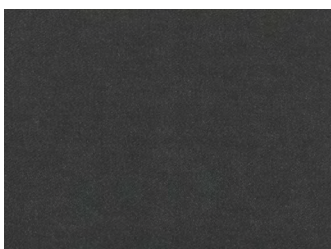
GOLD



LINEN



ANTHRACITE



NIAGARA

Composition | 100% PES

Martindale | 100 000

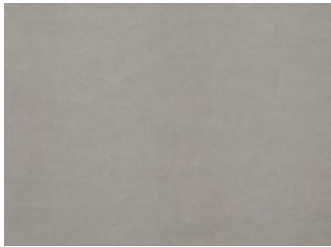
Lightfastness | 4

Pilling | 4-5



SEVEN

CAT 2



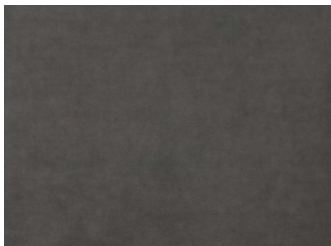
IVORY



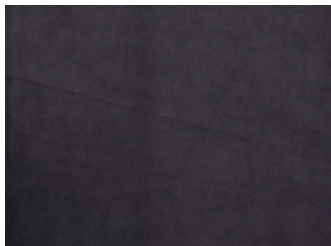
SHITAKE



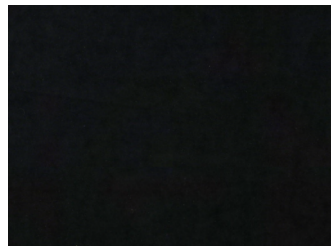
LIVER



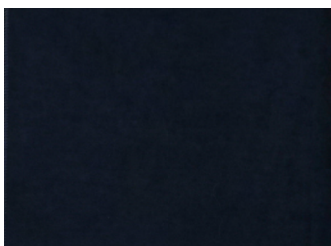
DOLPHIN



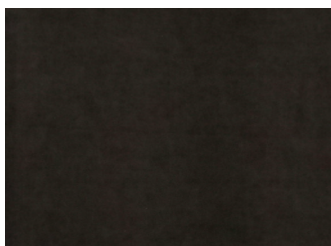
ANTHRACITE



ONYX



DARK BLUE



ESPRESSO



SCARLET

Composition | 81% PES, 19% CV

Martindale | 45 000

Lightfastness | 4-5

Pilling | 4-5

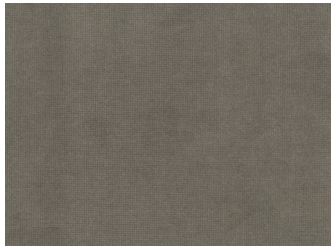


VELVETLUX

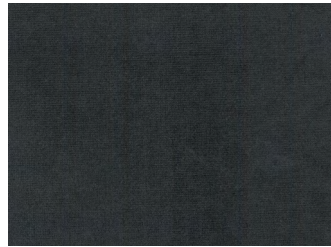
CAT 4



MIDNIGHT BLUE



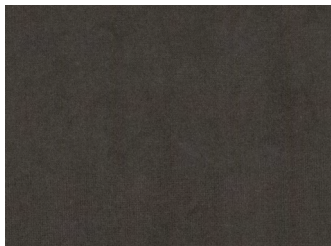
SAND



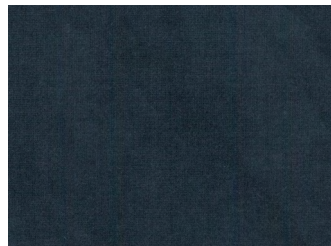
ANTHRACITE



DUSTY GREEN



DARK BROWN



NAVY BLUE



OKER



PETROL

VILMERS

Rest assured.

